



DRICONEQ™ DRILL PIPES

DTH | ROTARY | HDD | RC



With quality and service in focus | www.driconeq.com

Contents

Technical Specification	3
Common threads on our Drill Pipes	4
DRICONEQ™ Standard Pipes	5
DRICONEQ™ eX-Flow®	11
DRICONEQ™ Standard Drill Collar	12
ATLAS COPCO CM (695/760/780)	13
ATLAS COPCO ROC (F6/L6/L8/ SmartRoc/FlexiRoc)	14
ATLAS COPCO T4 (DM30/45/50, T4, RD20)	16
ATLAS COPCO SIMBA Underground	18
ATLAS COPCO TH60 (T2/T3/TH60/ 75E/100A)	19
ATLAS COPCO DM25	19
ATLAS COPCO PIT-VIPER/DMM	20
SANDVIK DRILTECH-GATOR	21
SANDVIK DRILTECH	22
SANDVIK CUBEX/UG/V-30/QXR (with splines)	24
SANDVIK QXR (TJBO) (no splines)	26
SANDVIK DI (TITON/BPI)	28
CAT (REEDRILL, SKS, SKF, MD)	30
CAT BUCYRUS	31
SCHRAMM CAROUSEL	32
SCHRAMM T64	33
SCHRAMM NT/WF (SQS)	34
SCHRAMM TX130	34
CR50	35
CR60	35
HAUSHERR	36
NORDMEYER	38
REICHDRILL	39
REVAHTI	40
SPEEDSTAR	40
RC (REVERSE CIRCULATION)	41
DITCH-WITCH	42
VERMEER	43
TRACTO-TECHNIC	43



Technical Specification

TUBEMATERIAL

Cold Drawn N80 (Standard pipe for DTH)

OD 2 3/4" (70 mm) to 5 1/2" (140 mm) wt up to 8,8 mm

Tensile strenght (Rm) min: 689 N/mm²

Yield strenght (Re) min: 550 N/mm²

Elongation A2" min: 18 %

Hot Rolled E355/ST52 (Standard pipe for DTH/Rotary)

OD 1 1/2" (38 mm) to 16" (406 mm) wt up to 50 mm

Tensile strenght (Rm) min: 490 N/mm²

Yield strenght (Re) min: 355 N/mm²

Elongation A5 min: 22 %

Cold Drawn X95 (On Request)

Tensile strenght (Rm) min: 800 N/mm²

Yield strenght (Re) min: 700 N/mm²

Elongation A2" min: 15 %

Other Grades on request

TOOLJOINTS

Micro Alloy steel: (Standard for DTH)

Surface Hardness: 650–750 HV

Depth: 0,1–0,2 mm

Q+T steel: (Standard for DTH/Rotary)

Hardness min: 300 HB

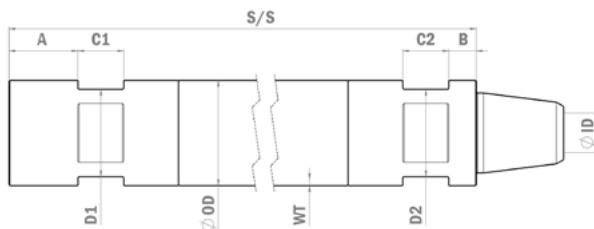


Common threads on our Drill Pipes

Outer diameter (mm)	Thread
42-44	AWJ, NC12
48-51	AWJ, CA21, CR50, NC13, RD40-6
54-57	1 1/4"BD, BWJ, NC16, RD40-6
60-63	BWJ, CR60, NC16, RD50-6, TR51
67-73	ACT/NWY/MAY JR DQ, GG2", HAUSHERR 2", MAYHEW JR, NWJ, RD50-6
76	2 3/8" API REG, 2"Z, ACT/NWY/MAY JR DQ, GG2", MAYHEW JR, RD50-6, #19
79	2 3/8" API REG, ACT/NWY/MAY JR DQ, GG2", MAYHEW JR, RD50-6, #21
83	2 3/8" API REG, MAYHEW REG
89	2 3/8" API IF/NC26, 2 3/8" API REG, 2 7/8" API REG, 2 1/2" Z, 2 3/8" AOH SPEC, 2 3/8" IF DS, MAYHEW REG, RD70-4, #21, #24
95	2 7/8" API REG, NORDMEYER
102	2 7/8" API REG, 3 1/8" DIBH, #24
114	2 7/8" API IF/NC31, 3 1/2" API IF/NC38, 3 1/2" API FH, 3 1/2" API REG, 3 1/2" DIBH, BECO 3", API NC35, #28
127	3 1/2" API IF/NC38, 3 1/2" API FH, 3 1/2" API REG, 3 1/2" DIBH, BECO 3 1/2", #28
140	4 1/2" API REG, 4 1/8" DIBH, 4" API FH/NC40, BECO 3 1/2"
152	4" API IF/NC46, 4 1/2" API FH, 4 1/2" API REG, BECO 4"
159	4 1/2" API IF/NC50, BECO 4"
168	4 1/2" API IF/NC50, 5 1/2" API REG, BECO 4"
177	5 1/2" API FH, 5 1/2" API REG, BECO 4 1/2"
194	5 1/2" API IF, 6 5/8" API REG, BECO 5 1/4"
203	5 1/2" API IF, 6 5/8" API FH, 6 5/8" API REG, BECO 5 1/4"
219	6 5/8" API IF, 7 5/8" API REG, BECO 6"
235	6 5/8" API IF, 7 5/8" API REG, BECO 6"
254	8 5/8" API REG
273	8 5/8" API REG, BECO 8"

DRICONEQ™ Standard Pipes

Diameter: **OD = 42–406 mm**
Length: **S/S = 500–12000 mm**



Outer diameter (mm)	Wall thickness (mm)	S/S length (mm)	Thread	Flats (mm)	Weight (kg)	Part Number
---------------------	---------------------	-----------------	--------	------------	-------------	-------------

COMMON SMALL DIAMETER PIPES AND THREADS

42–44	5–7	500–6000	AWJ , NC12			On Request
48–51	5–7	500–6000	AWJ , NC13 , RD40-6			On Request
54–57	5–8	500–6000	BWJ , NC16 , RD40-6			On Request
60–63	5–8	500–6000	NC16 , RD50-6			On Request
70	4,0	1000	MAYHEW JR	55	9,9	10-4130
70	4,0	1000	ACT/NWY/MAY JR DQ	55	9,9	10-2147
70	4,0	1000	RD50-6	55	9,9	10-1002
70	4,0	1500	MAYHEW JR	55	13,1	10-4132
70	4,0	1500	ACT/NWY/MAY JR DQ	55	13,1	10-1541
70	4,0	1500	RD50-6	55	13,1	10-1003
70	4,0	3000	MAYHEW JR	55	22,9	10-4133
70	4,0	3000	ACT/NWY/MAY JR DQ	55	22,9	10-1540
70	4,0	3000	RD50-6	55	22,9	10-1005
70	6,3	1500	ACT/NWY/MAY JR DQ	55	17,5	10-2559
70	6,3	3000	ACT/NWY/MAY JR DQ	55	32,4	10-2139
76	4,0	500	2 3/8"API REG	65	8,4	10-1241
76	4,0	750	2 3/8"API REG	65	10,1	10-1382
76	4,0	1000	2 3/8"API REG	65	11,8	10-1014
76	4,0	1500	2 3/8"API REG	65	15,2	10-1015
76	4,0	1800	2 3/8"API REG	65	17,2	10-1596

Outer diameter (mm)	Wall thickness (mm)	S/S length (mm)	Thread	Flats (mm)	Weight (kg)	Part Number
76	4,0	1900	2 3/8"API REG	65	17,9	10-1016
76	4,0	2000	2 3/8"API REG	65	18,6	10-1017
76	4,0	3000	2 3/8"API REG	65	25,4	10-4000
76	4,0	3000	RD50-6	65	24,2	10-1013
76	6,3	500	2 3/8"API REG	65	8,7	10-2538
76	6,3	600	2 3/8"API REG	65	9,8	10-1368
76	6,3	750	2 3/8"API REG	65	11,4	10-2532
76	6,3	1000	2 3/8"API REG	65	14,1	10-1035
76	6,3	1200	2 3/8"API REG	65	16,3	10-1615
76	6,3	1350	2 3/8"API REG	65	17,9	10-3625
76	6,3	1500	2 3/8"API REG	65	19,5	10-1036
76	6,3	1600	2 3/8"API REG	65	20,6	10-1524
76	6,3	1700	2 3/8"API REG	65	21,7	10-1442
76	6,3	1800	2 3/8"API REG	65	22,7	10-1369
76	6,3	1830	2 3/8"API REG	65	23,1	10-1318
76	6,3	1850	2 3/8"API REG	65	23,3	10-2059
76	6,3	1900	2 3/8"API REG	65	23,8	10-1052
76	6,3	2000	2 3/8"API REG	65	24,9	10-1037
76	6,3	2100	2 3/8"API REG	65	26,0	10-1384
76	6,3	3000	2 3/8"API REG	65	35,7	10-1038
76	6,3	3048	2 3/8"API REG	65	36,2	10-1356
76	6,3	4000	2 3/8"API REG	65	46,5	10-1039
76	6,3	4500	2 3/8"API REG	65	51,9	10-1040
76	6,3	5000	2 3/8"API REG	65	57,3	10-1328
76	6,3	6000	2 3/8"API REG	65	68,1	10-1041
76	8,8	1000	2 3/8"API REG	65	17,1	10-2219
76	8,8	1500	2 3/8"API REG	65	24,4	10-2220
76	8,8	2000	2 3/8"API REG	65	31,7	10-2221
76	8,8	3000	2 3/8"API REG	65	46,3	10-2222
89	4,0	500	2 3/8"API REG	65	9,6	10-1771
89	4,0	1000	2 3/8"IF	65	14,5	10-1059
89	4,0	1000	2 3/8"API REG	65	13,8	10-1046
89	4,0	1000	2 7/8"API REG	65	14,6	10-1065
89	4,0	1000	RD70-4	65	13,0	10-1042
89	4,0	1500	2 3/8"IF	65	18,7	10-1060
89	4,0	1500	2 3/8"API REG	65	18,0	10-1047
89	4,0	1500	2 7/8"API REG	65	18,8	10-1066
89	4,0	1500	RD70-4	65	17,2	10-1043

Outer diameter (mm)	Wall thickness (mm)	S/S length (mm)	Thread	Flats (mm)	Weight (kg)	Part Number
89	4,0	2000	2 3/8"IF	65	22,9	10-1061
89	4,0	2000	2 3/8"API REG	65	22,2	10-1050
89	4,0	2000	2 7/8"API REG	65	23,0	10-1067
89	4,0	2000	RD70-4	65	21,4	10-1044
89	4,0	3000	2 3/8"IF	65	31,3	10-1062
89	4,0	3000	2 3/8"API REG	65	30,5	10-1051
89	4,0	3000	2 7/8"API REG	65	31,4	10-1068
89	4,0	3000	RD70-4	65	29,9	10-1045
89	6,3	500	2 3/8"API REG	65	10,9	10-1250
89	6,3	1000	2 3/8"IF	65	17,8	10-1082
89	6,3	1000	2 3/8"API REG	65	17,3	10-1076
89	6,3	1000	2 7/8"API REG	65	18,0	10-1088
89	6,3	1500	2 3/8"IF	65	24,2	10-1083
89	6,3	1500	2 3/8"API REG	65	23,7	10-1077
89	6,3	1500	2 7/8"API REG	65	24,4	10-1089
89	6,3	2000	2 3/8"IF	65	30,6	10-1084
89	6,3	2000	2 3/8"API REG	65	30,1	10-1078
89	6,3	2000	2 7/8"API REG	65	30,8	10-1090
89	6,3	2500	2 3/8"API REG	65	36,5	10-1221
89	6,3	3000	2 3/8" IF	65	43,4	10-1085
89	6,3	3000	2 3/8"API REG	65	42,9	10-1079
89	6,3	3000	2 7/8"API REG	65	43,6	10-1091
89	6,3	3000	RD70-4	65	42,3	10-1072
89	6,3	4000	2 3/8" IF	65	56,2	10-1848
89	6,3	4000	2 3/8"API REG	65	55,7	10-1316
89	6,3	5000	2 3/8" IF	65	69,0	10-1959
89	6,3	5000	2 3/8"API REG	65	68,5	10-1286
89	6,3	6000	2 3/8" IF	65	81,8	10-1087
89	6,3	6000	2 3/8"API REG	65	81,7	10-1081
89	6,3	6000	2 7/8"API REG	65	82,0	10-1093
89	8,8	500	2 3/8"API REG	65	11,8	10-2122
89	8,8	1000	2 3/8"API REG	65	19,8	10-1877
89	8,8	1500	2 3/8"API REG	65	27,8	10-2241
89	8,8	2000	2 3/8"API REG	65	35,7	10-1611
89	8,8	3000	2 3/8"API REG	65	51,7	10-1564
89	8,8	4000	2 3/8"API REG	65	67,7	10-4007
89	8,8	5000	2 3/8"API REG	65	83,6	10-3177
89	8,8	6000	2 3/8"API REG	65	99,6	10-2878

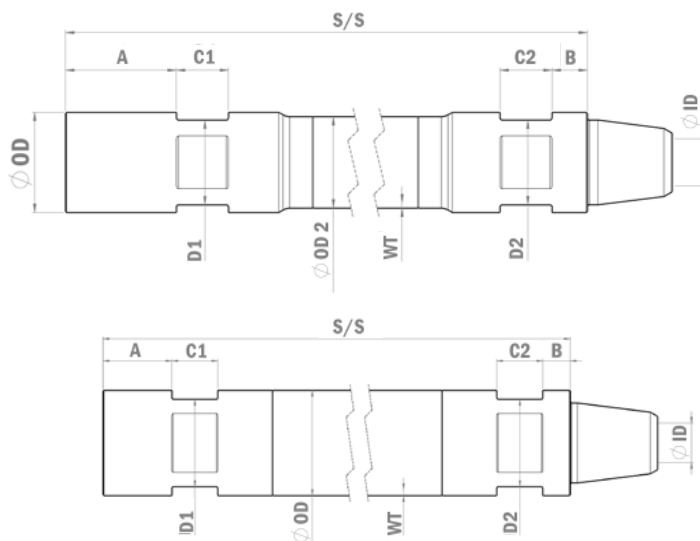
Outer diameter (mm)	Wall thickness (mm)	S/S length (mm)	Thread	Flats (mm)	Weight (kg)	Part Number
102	6,3	1000	2 7/8"API REG	75	23,6	10-1849
102	6,3	1500	2 7/8"API REG	75	31,0	10-1850
102	6,3	2000	2 7/8"API REG	75	38,4	10-1851
102	6,3	3000	2 7/8"API REG	75	53,2	10-1852
102	6,3	4000	2 7/8"API REG	75	68,0	10-1853
102	6,3	5000	2 7/8"API REG	75	82,8	10-1761
102	6,3	6000	2 7/8"API REG	75	97,6	10-1854
114	6,3	500	3 1/2"API REG	95	18,0	10-1530
114	6,3	500	3 1/2" IF	95	18,5	10-4135
114	6,3	750	3 1/2"API REG	95	22,2	10-1531
114	6,3	750	3 1/2" IF	95	22,7	10-4134
114	6,3	1000	3 1/2"API REG	95	26,4	10-1132
114	6,3	1000	3 1/2" IF	95	26,9	10-1159
114	6,3	1500	3 1/2"API REG	95	34,8	10-1134
114	6,3	1500	3 1/2" IF	95	35,3	10-1160
114	6,3	2000	3 1/2"API REG	95	43,2	10-1138
114	6,3	2000	3 1/2" IF	95	43,7	10-1161
114	6,3	3000	3 1/2"API REG	95	60,0	10-1139
114	6,3	3000	3 1/2" IF	95	60,5	10-1632
114	6,3	4000	3 1/2"API REG	95	76,8	10-1762
114	6,3	4000	3 1/2" IF	95	77,3	10-1491
114	6,3	5000	3 1/2"API REG	95	93,6	10-1245
114	6,3	5000	3 1/2"IF	95	94,1	10-1727
114	6,3	6000	3 1/2"API REG	95	110,4	10-1141
114	6,3	6000	3 1/2"IF	95	110,9	10-1164
114	8,8	500	3 1/2"API REG	95	19,4	10-1617
114	8,8	500	3 1/2"IF	95	19,9	10-4137
114	8,8	750	3 1/2"API REG	95	25,1	10-1233
114	8,8	750	3 1/2"IF	95	25,6	10-4136
114	8,8	1000	3 1/2"API REG	95	30,8	10-1171
114	8,8	1000	3 1/2"IF	95	31,3	10-1185
114	8,8	1500	3 1/2"API REG	95	42,3	10-1172
114	8,8	1500	3 1/2"IF	95	42,8	10-1186
114	8,8	2000	3 1/2"API REG	95	53,7	10-1173
114	8,8	2000	3 1/2"IF	95	54,2	10-1187
114	8,8	3000	3 1/2"API REG	95	76,6	10-1174
114	8,8	3000	3 1/2"IF	95	77,1	10-1188

Outer diameter (mm)	Wall thickness (mm)	S/S length (mm)	Thread	Flats (mm)	Weight (kg)	Part Number
114	8,8	4000	3 1/2"API REG	95	99,5	10-1344
114	8,8	4000	3 1/2"IF	95	100,0	10-4138
114	8,8	5000	3 1/2"API REG	95	122,4	10-1955
114	8,8	5000	3 1/2"IF	95	122,9	10-1459
114	8,8	6000	3 1/2"API REG	95	145,3	10-1176
114	8,8	6000	3 1/2"IF	95	145,8	10-1190
127	6,3	1000	3 1/2"IF	95	35,5	10-1857
127	6,3	1000	3 1/2"API REG	95	36,5	10-1300
127	6,3	1500	3 1/2"IF	95	44,9	10-1858
127	6,3	1500	3 1/2"API REG	95	45,9	10-1301
127	6,3	2000	3 1/2"IF	95	54,3	10-1859
127	6,3	2000	3 1/2"API REG	95	55,3	10-1314
127	6,3	3000	3 1/2"IF	95	73,1	10-1401
127	6,3	3000	3 1/2"API REG	95	74,1	10-1274
127	6,3	4000	3 1/2"IF	95	91,9	10-4139
127	6,3	4000	3 1/2"API REG	95	92,9	10-2091
127	6,3	5000	3 1/2"IF	95	110,7	10-2063
127	6,3	5000	3 1/2"API REG	95	111,7	10-2690
127	6,3	6000	3 1/2" IF	95	129,5	10-1370
127	6,3	6000	3 1/2"API REG	95	130,5	10-1307
127	8,8	1000	3 1/2" IF	95	39,8	10-1867
127	8,8	1000	3 1/2"API REG	95	41,1	10-1308
127	8,8	1500	3 1/2" IF	95	52,6	10-1814
127	8,8	1500	3 1/2"API REG	95	53,9	10-1309
127	8,8	2000	3 1/2" IF	95	65,5	10-1868
127	8,8	2000	3 1/2"API REG	95	66,8	10-1310
127	8,8	3000	3 1/2" IF	95	91,2	10-1869
127	8,8	3000	3 1/2"API REG	95	92,5	10-1311
127	8,8	4000	3 1/2" IF	95	116,9	10-4142
127	8,8	4000	3 1/2"API REG	95	118,2	10-4140
127	8,8	5000	3 1/2" IF	95	142,6	10-2062
127	8,8	5000	3 1/2"API REG	95	143,9	10-4141
127	8,8	6000	3 1/2" IF	95	168,3	10-1870
127	8,8	6000	3 1/2"API REG	95	169,6	10-1312
140	8,8	500	3 1/2" IF	120	33,2	10-4144
140	8,8	500	3 1/2"API REG	120	34,4	10-4143
140	8,8	500	4 1/2"API REG	120	32,3	10-1724

Outer diameter (mm)	Wall thickness (mm)	S/S length (mm)	Thread	Flats (mm)	Weight (kg)	Part Number
140	8,8	1000	3 1/2" IF	120	47,4	10-1874
140	8,8	1000	3 1/2"API REG	120	48,6	10-1416
140	8,8	1000	4 1/2"API REG	120	46,5	10-1320
140	8,8	1500	3 1/2" IF	120	61,6	10-1420
140	8,8	1500	3 1/2"API REG	120	62,8	10-1418
140	8,8	1500	4 1/2"API REG	120	60,7	10-1321
140	8,8	2000	3 1/2" IF	120	75,8	10-1875
140	8,8	2000	3 1/2"API REG	120	77,0	10-1425
140	8,8	2000	4 1/2"API REG	120	74,9	10-1322
140	8,8	3000	3 1/2" IF	120	104,2	10-1518
140	8,8	3000	3 1/2"API REG	120	105,4	10-1426
140	8,8	3000	4 1/2"API REG	120	103,3	10-1323
140	8,8	4000	3 1/2" IF	120	132,6	10-1876
140	8,8	4000	3 1/2"API REG	120	133,8	10-1871
140	8,8	4000	4 1/2"API REG	120	131,7	10-1572
140	8,8	5000	3 1/2"IF	120	161,0	10-1519
140	8,8	5000	3 1/2"API REG	120	162,2	10-1872
140	8,8	5000	4 1/2"API REG	120	160,1	10-1495
140	8,8	6000	3 1/2"IF	120	189,4	10-1520
140	8,8	6000	3 1/2"API REG	120	190,6	10-1873
140	8,8	6000	4 1/2"API REG	120	188,5	10-1324

COMMON LARGE DIAMETER PIPES AND THREADS

152	10-25	500-12000	Depends on application	On Request
159	10-25	500-12000	Depends on application	On Request
168	10-25	500-12000	Depends on application	On Request
178	10-25	500-12000	Depends on application	On Request
194	12-25	500-12000	Depends on application	On Request
219	12-25	500-12000	Depends on application	On Request
273	12-25	500-12000	Depends on application	On Request
305	12-25	500-12000	Depends on application	On Request
323	12-25	500-12000	Depends on application	On Request
406	12-25	500-12000	Depends on application	On Request



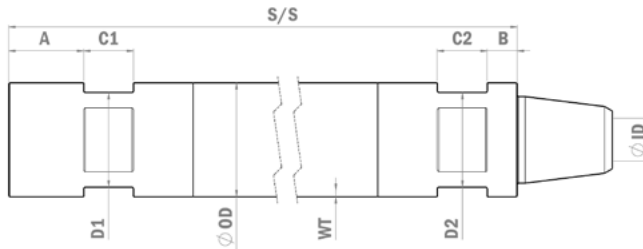
Outer diameter (mm)	Wall thickness (mm)	S/S length (mm)	Thread	Flats (mm)	Weight (kg)	Part Number
76/70	4	1000	2 3/8"API REG	65	12,5	10-4183
76/70	4	1500	2 3/8"API REG	65	16,5	10-4184
76/70	4	2000	2 3/8"API REG	65	20,5	10-4012
76/70	4	3000	2 3/8"API REG	65	28,5	10-3956
76	4	3000	2 3/8"API REG	65	31,8	10-4121
76	6,3	3000	2 3/8"API REG	65	40,8	10-4122

DRICONEQ™

Standard Drill Collar

Diameter: **OD = 89 mm**

Length: **S/S = 1000–3000 mm**

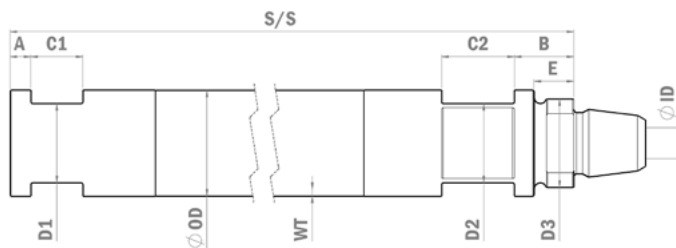


Outer diameter (mm)	Wall thickness (mm)	S/S length (mm)	Thread box	Thread pin	Flats (mm)	Weight (kg)	Part Number
89	16	1000	2 3/8"API REG	2 3/8"API REG	65	30,2	12-1050
89	16	1300	3 1/2"API REG	2 3/8"API REG	95/65	41,9	12-1525
89	16	1500	3 1/2"API REG	2 3/8"API REG	95/65	47,7	12-1009
89	16	1500	2 3/8"API REG	2 3/8"API REG	65	44,6	12-1005
89	16	1600	2 3/8"API REG	2 3/8"API REG	65	47,5	12-1053
89	16	1650	2 3/8"API REG	2 3/8"API REG	65	49,0	12-1056
89	16	1700	2 3/8"API REG	2 3/8"API REG	65	50,4	12-1006
89	16	1700	3 1/2"API REG	2 3/8"API REG	95/65	53,4	12-1074
89	16	1750	2 3/8"API REG	2 3/8"API REG	65	51,8	12-1063
89	16	1800	2 3/8"API REG	2 3/8"API REG	65	53,3	12-1047
89	16	1800	3 1/2"API REG	2 3/8"API REG	95/65	56,3	12-1049
89	16	1850	2 3/8"API REG	2 3/8"API REG	65	54,7	12-1040
89	16	1900	2 3/8"API REG	2 3/8"API REG	65	56,2	12-1041
89	16	1900	3 1/2"API REG	2 3/8"API REG	95/65	59,2	12-1023
89	16	1950	2 3/8"API REG	2 3/8"API REG	65	57,6	12-1037
89	16	1960	2 3/8"API REG	2 3/8"API REG	65	57,9	12-1589
89	16	2000	3 1/2"API REG	2 3/8"API REG	95/65	62,1	12-1052
89	16	2000	2 3/8"API REG	2 3/8"API REG	65	59,0	12-1007
89	16	2050	2 3/8"API REG	2 3/8"API REG	65	60,5	12-1298
89	16	2100	2 3/8"API REG	2 3/8"API REG	65	61,9	12-1088
89	16	2150	2 3/8"API REG	2 3/8"API REG	65	63,4	12-1511
89	16	2200	2 3/8"API REG	2 3/8"API REG	65	64,8	12-1077
89	16	2250	2 3/8"API REG	2 3/8"API REG	65	65,5	12-1080
89	16	3000	2 3/8"API REG	2 3/8"API REG	65	87,8	12-1530

ATLAS COPCO

CM (695/760/780)

Diameter: **OD = 76–102 mm**
 Length: **S/S = 2700–5000 mm**

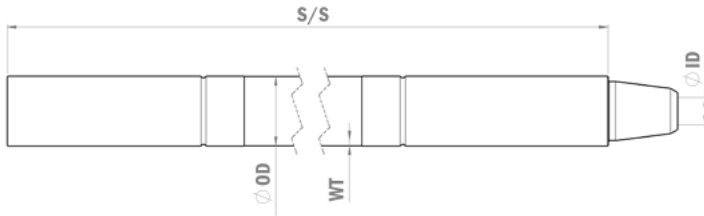


Outer diameter (mm)	Wall thickness (mm)	S/S length (mm)	Thread box	Thread pin	Flats (mm)	Weight (kg)	Part Number
76	6,3	2700	2"Z	2"Z	CM	33,6	10-1785
76	6,3	4000	2"Z	2"Z	CM	45,5	10-1691
76	6,3	5000	2"Z	2"Z	CM	56,3	10-2750
76	8,8	2900	2 3/8"API REG	2"Z	CM	46,6	10-2311
76	8,8	4000	2"Z	2"Z	CM	61,6	10-4145
76	8,8	4600	2 3/8"API REG	2"Z	CM	71,4	10-2753
76	12,5	4000	2"Z	2"Z	CM	80,6	10-2380
89	6,3	4000	2 1/2"Z	2 1/2"Z	CM	57,8	10-57699050
89	6,3	5000	2 1/2"Z	2 1/2"Z	CM	70,6	10-2752
89	8,8	2400	3 1/2" API REG	2 1/2"Z	CM	49,6	10-2124
89	8,8	2700	2 3/8"API REG	2 1/2"Z	CM	60,0	10-2411
89	8,8	2700	2 3/8"API REG	2 1/2"Z	CM	49,6	10-57699043
89	8,8	4400	3 1/2" API REG	2 1/2"Z	CM	81,5	10-2749
89	8,8	4600	2 3/8"API REG	2 1/2"Z	CM	80,0	10-2751
102	6,3	2435	2 1/2"Z	2 1/2"Z	CM	44,0	10-2381
102	6,3	4000	2 1/2"Z	2 1/2"Z	CM	66,9	10-1516
102	6,3	5000	2 1/2"Z	2 1/2"Z	CM	81,7	10-2624
102	8,8	2700	3 1/2" API REG	2 1/2"Z	CM	65,4	10-2626
102	8,8	4400	3 1/2" API REG	2 1/2"Z	CM	99,6	10-2625
102	12,5	4000	3 1/2" API REG	2 1/2"Z	CM	118,0	10-2382

ATLAS COPCO

ROC (F6/L6/L8/ SmartRoc/FlexiRoc)

Diameter: **OD = 76–140 mm**
 Length: **S/S = 1800–6000 mm**



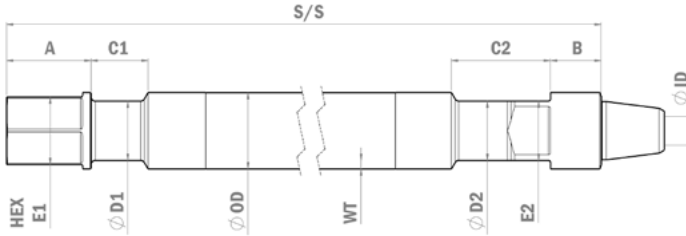
Outer diameter (mm)	Wall thickness (mm)	S/S length (mm)	Thread	Flats (mm)	Weight (kg)	Part Number
76	4	4000	2 3/8" API REG	ROC	36,5	10-1227
76	6,3	1800	2 3/8" API REG	ROC	26,8	10-2280
76	6,3	3700	2 3/8" API REG	ROC	47,3	10-1404
76	6,3	4000	2 3/8" API REG	ROC	50,5	10-1303
76	6,3	5000	2 3/8" API REG	ROC	61,3	10-1302
76	6,3	6000	2 3/8" API REG	ROC	72,1	10-1529
89	6,3	4000	2 3/8" API REG	ROC	62,5	10-1338
89	6,3	5000	2 3/8" API REG	ROC	75,3	10-1207
89	6,3	6000	2 3/8" API REG	ROC	88,1	10-1694
89	8,8	4000	2 3/8" API REG	ROC	73,9	10-1489
89	8,8	5000	2 3/8" API REG	ROC	89,9	10-1926
89	8,8	6000	2 3/8" API REG	ROC	105,9	10-1833
89	8,8	6000	2 7/8" API REG	ROC	106,1	10-4150
89	8,8	6000	2 3/8" IF	ROC	105,6	10-2067
102	6,3	4000	2 7/8" API REG	ROC	75,8	10-2778
102	6,3	5000	2 7/8" API REG	ROC	90,6	10-1266
102	6,3	6000	2 7/8" API REG	ROC	105,4	10-1618
102	8,8	4000	2 7/8" API REG	ROC	94,4	10-3550
102	8,8	5000	2 7/8" API REG	ROC	114,5	10-1885
102	8,8	6000	2 7/8" API REG	ROC	134,6	10-2686

Outer diameter (mm)	Wall thickness (mm)	S/S length (mm)	Thread	Flats (mm)	Weight (kg)	Part Number
114	6,3	4000	3 1/2" API REG	ROC	87,6	10-2223
114	6,3	5000	3 1/2" API REG	ROC	104,4	10-2276
114	6,3	6000	3 1/2" API REG	ROC	121,2	10-1238
114	8,8	4000	3 1/2" API REG	ROC	109,2	10-3860
114	8,8	5000	3 1/2" API REG	ROC	132,1	10-1886
114	8,8	6000	3 1/2" API REG	ROC	155	10-2072
127	6,3	5000	3 1/2" API REG	ROC	122,9	10-4152
127	6,3	6000	3 1/2" API REG	ROC	141,7	10-1533
127	8,8	5000	3 1/2" API REG	ROC	153,4	10-4151
127	8,8	6000	3 1/2" API REG	ROC	179,1	10-1922
127	12,5	5000	3 1/2" API REG	ROC	198,4	10-4153
127	12,5	6000	3 1/2" API REG	ROC	233,7	10-3557
140	8,8	5000	4 1/2" API REG	ROC	166,8	10-2818
140	8,8	6000	4 1/2" API REG	ROC	195,2	10-1834
140	12,5	5000	4 1/2" API REG	ROC	216,9	10-4154
140	12,5	6000	4 1/2" API REG	ROC	256,1	10-3855

ATLAS COPCO

T4 (DM30/45/50, T4, RD20)

Diameter: **OD = 102–194 mm**
 Length: **S/S = 6096–10668 mm**



Outer diameter (mm)	Wall thickness (mm)	S/S length (mm)	Thread	Flats (mm)	Weight (kg)	Part Number
102	8,8	7620	2 7/8" API REG	T4	168,5	10-2413
102	8,8	9144	2 7/8" API REG	T4	199,2	10-1914
102	19	8077	2 7/8" API REG	T4	301,0	10-2390
102	19	9144	2 7/8" API REG	T4	338,0	10-1988
114	8,8	6096	2 7/8" IF	T4	151,3	10-1981
114	8,8	6096	3 1/2" API REG	T4	154,3	10-1620
114	8,8	7620	2 7/8" IF	T4	186,2	10-2420
114	8,8	7620	3 1/2" API REG	T4	189,2	10-1228
114	8,8	9144	2 7/8" IF	T4	221,1	10-1712
114	8,8	9144	3 1/2" API REG	T4	224,1	10-1841
114	8,8	9144	3" BECO	T4	225,7	10-2534
114	12,5	6553	3 1/2" API REG	T4	219,3	10-1484
114	12,5	7620	3 1/2" API REG	T4	250,6	10-1486
114	12,5	9144	3 1/2" API REG	T4	298,4	10-1515
114	12,5	10668	3 1/2" API REG	T4	346,3	10-2332
114	16	6553	3 1/2" API REG	T4	264,9	10-2310
114	16	8534	3 1/2" API REG	T4	341,8	10-2665
114	19	7620	3 1/2" API REG	T4	360,2	10-2899
114	19	8077	3 1/2" API REG	T4	381,5	10-1662
114	19	9144	3 1/2" API REG	T4	428,8	10-1657
114	19	10668	3 1/2" API REG	T4	499,7	10-3108
127	8,8	6553	3 1/2" API REG	T4	190,5	10-2393
127	8,8	7620	3 1/2" API REG	T4	214,4	10-2029
127	8,8	9144	3 1/2" API REG	T4	253,6	10-1681
127	8,8	9144	3 1/2" BECO	T4	256,3	10-2094

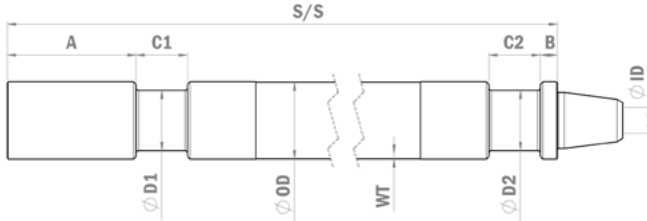
Outer diameter (mm)	Wall thickness (mm)	S/S length (mm)	Thread	Flats (mm)	Weight (kg)	Part Number
127	12,5	6553	3 1/2 " API REG	T4	249,8	10-1968
127	12,5	6553	3 1/2 " BECO	T4	250,4	10-2424
127	12,5	7620	3 1/2 " API REG	T4	282,2	10-1593
127	12,5	7620	3 1/2 " BECO	T4	286,7	10-2346
127	12,5	8077	3 1/2 " API REG	T4	303,6	10-1975
127	12,5	8077	3 1/2 " BECO	T4	304,2	10-2394
127	12,5	9144	3 1/2 " API REG	T4	336,0	10-1685
127	12,5	9144	3 1/2 " BECO	T4	340,5	10-2327
127	12,5	10668	3 1/2 " API REG	T4	389,8	10-2320
127	12,5	10668	3 1/2 " BECO	T4	394,3	10-2322
127	19	6553	3 1/2 " API REG	T4	364,0	10-2309
127	19	6553	3 1/2 " BECO	T4	366,5	10-2308
127	19	7620	3 1/2 " API REG	T4	414,1	10-1682
127	19	7620	3 1/2 " BECO	T4	418,7	10-2347
127	19	8077	3 1/2 " API REG	T4	444,6	10-2326
127	19	8077	3 1/2 " BECO	T4	446,6	10-3877
127	19	9144	3 1/2 " API REG	T4	494,7	10-1683
127	19	9144	3 1/2 " BECO	T4	499,3	10-2328
127	19	10668	3 1/2 " API REG	T4	575,3	10-2321
127	19	10668	3 1/2 " BECO	T4	579,9	10-2323
140	12,5	6299	4"FH	T4	273,0	10-2672
140	12,5	6299	3 1/2 " BECO	T4	277,5	10-2396
140	12,5	7620	4"FH	T4	319,8	10-1983
140	12,5	7620	3 1/2 " BECO	T4	325,0	10-1982
140	12,5	7823	3 1/2 " BECO	T4	337,3	10-2395
140	12,5	9144	4"FH	T4	384,4	10-2733
140	12,5	9144	3 1/2 " BECO	T4	389,0	10-1985
140	12,5	10668	3 1/2 " BECO	T4	444,5	10-2324
140	19	6299	3 1/2 " BECO	T4	398,4	10-2315
140	19	7620	3 1/2 " BECO	T4	472,3	10-1765
140	19	8077	3 1/2 " BECO	T4	499,3	10-3785
140	19	9144	3 1/2 " BECO	T4	562,2	10-1810
140	19	10668	3 1/2 " BECO	T4	652,2	10-2325
140	25	6300	3 1/2 " BECO	T4	464,5	10-2316
140	25	7620	3 1/2 " BECO	T4	554,0	10-2314
140	25	9144	3 1/2 " BECO	T4	661,8	10-2329

COMMON LARGER DIAMETERS

159	12-25		4" BECO	T4		On Request
168	12-25		4" BECO	T4		On Request
178	12-25		4 1/2" BECO	T4		On Request
194	12-25		5 1/4" BECO	T4		On Request

ATLAS COPCO SIMBA Underground

Diameter: **OD = 76–114 mm**
 Length: **S/S = 1500–1875 mm**

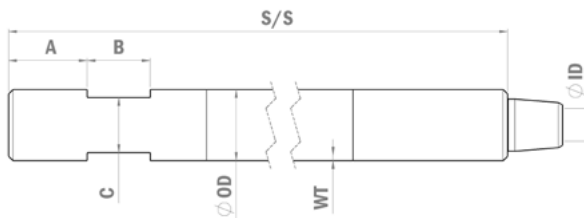


Outer diameter (mm)	Wall thickness (mm)	S/S length (mm)	Thread box	Thread pin	Flats (mm)	Weight (kg)	Part Number
76	6,3	1800	2 3/8"API REG	2 3/8"API REG	SIMBA	25,5	10-4240
89	6,3	1500	2 3/8"API REG	2 3/8"API REG	SIMBA	27,9	10-2082
89	6,3	1800	2 3/8"API REG	2 3/8"API REG	SIMBA	31,7	10-4146
89	8,8	1800	2 3/8"API REG	3 1/2"API REG	SIMBA	37,8	10-3545
102	6,3	1500	2 7/8"API REG	2 7/8"API REG	SIMBA	34,3	10-4149
102	6,3	1800	2 7/8"API REG	2 7/8"API REG	SIMBA	38,8	10-4148
114	6,3	1500	3 1/2"API REG	3 1/2"API REG	SIMBA	41,1	10-4147
114	6,3	1875	3 1/2"API REG	3 1/2"API REG	SIMBA	47,4	10-2960

ATLAS COPCO

TH60 (T2/T3/TH60/ 75E/100A)

Diameter: **OD = 89-114 mm**
Length: **S/S = 6096 mm**

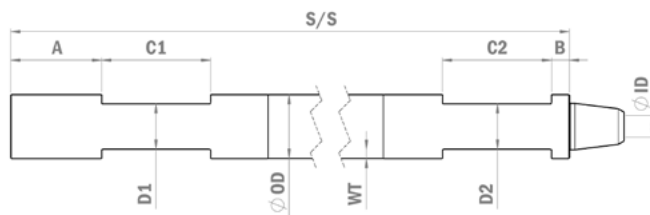


Outer diameter (mm)	Wall thickness (mm)	S/S length (mm)	Thread	Flats (mm)	Weight (kg)	Part Number
89	8,8	6096	2 3/8" IF (NC26)	TH60	105,3	10-1281
114	8,8	6096	2 7/8" IF	TH60	157,1	10-1713
114	8,8	6096	3 1/2" API REG	TH60	157,7	10-2419
114	8,8	6096	3 1/2" FH	TH60	156,2	10-1544
114	8,8	6096	3 1/2" IF	TH60	155,8	10-2417

ATLAS COPCO

DM25

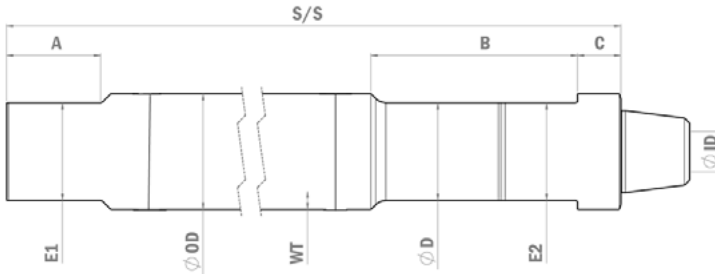
Diameter: **OD = 89-102 mm**
Length: **S/S = 6400-9144 mm**



Outer diameter (mm)	Wall thickness (mm)	S/S length (mm)	Thread	Flats (mm)	Weight (kg)	Part Number
89	12,5	8077	2 3/8" API REG	DM25	199,0	10-2449
89	12,5	9144	2 3/8" API REG	DM25	224,1	10-2387
102	8,8	6400	2 7/8" API REG	DM25	144,3	10-2415
102	8,8	7620	2 7/8" API REG	DM25	170,6	10-2389

ATLAS COPCO PIT-VIPER/DMM

Diameter: **OD = 114–343 mm**
Length: **S/S = 9144–12192 mm**



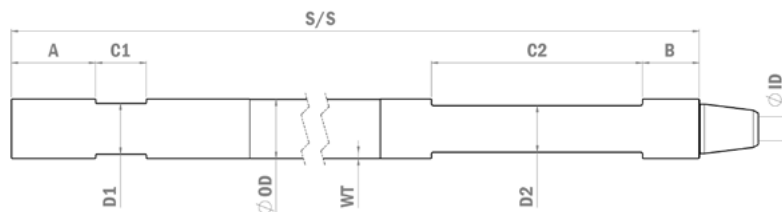
Outer diameter (mm)	Wall thickness (mm)	S/S length (mm)	Thread	Flats (mm)	Weight (kg)	Part Number
114	12	9144	3 1/2" API REG	PIT-VIPER	304,0	10-3661
114	12	10668	3 1/2" API REG	PIT-VIPER	351,9	10-3662
114	19	11378	3" BECO	PIT-VIPER	543,9	10-3268
114	19	12192	3" BECO	PIT-VIPER	581,8	10-3642

COMMON LARGER DIAMETERS

127	12–25		3 1/2" API REG	PIT-VIPER		On Request
127	12–25		3 1/2" BECO	PIT-VIPER		On Request
127	12–25		4 1/8" DIBH	PIT-VIPER		On Request
140	12–25		3 1/2" BECO	PIT-VIPER		On Request
140	12–25		4 1/8" DIBH	PIT-VIPER		On Request
159	12–25		4" BECO	PIT-VIPER		On Request
178	12–25		4 1/2" BECO	PIT-VIPER		On Request
194	12–25		5 1/4" BECO	PIT-VIPER		On Request
203	12–25		5 1/4" BECO	PIT-VIPER		On Request
219	12–38		6" BECO	PIT-VIPER		On Request
235	12–38		6" BECO	PIT-VIPER		On Request
273	12–38		8" BECO	PIT-VIPER		On Request
324	12–38		8" BECO	PIT-VIPER		On Request
343	12–38		8" BECO	PIT-VIPER		On Request
343	12–38		10" BECO	PIT-VIPER		On Request

SANDVIK DRILTECH-GATOR

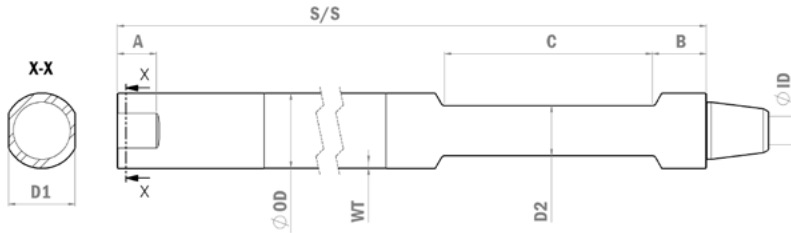
Diameter: **OD = 76–114 mm**
Length: **S/S = 2896–7650 mm**



Outer diameter (mm)	Wall thickness (mm)	S/S length (mm)	Thread	Flats (mm)	Weight (kg)	Part Number
76	6,3	2896	2 3/8"API REG	GATOR	42,6	10-1383
76	6,3	3962	2 3/8"API REG	GATOR	54,1	10-1381
76	12,5	7650	2 3/8"API REG	GATOR	154,3	10-1695
89	8,8	2896	2 3/8"API REG	GATOR	63,5	10-1626
89	8,8	2896	2 7/8"API REG	GATOR	62,7	10-1698
89	8,8	3962	2 3/8"API REG	GATOR	80,5	10-1627
89	8,8	3962	2 7/8"API REG	GATOR	79,7	10-1699
89	8,8	6096	2 3/8"IF	GATOR	108,4	10-1460
89	12,5	7650	2 3/8"API REG	GATOR	192,1	10-1434
102	8,8	2896	2 7/8"API REG	GATOR	80,3	10-1628
102	8,8	3962	2 3/8"IF	GATOR	99,8	10-1806
102	8,8	3962	2 7/8"API REG	GATOR	101,8	10-1629
114	8,8	2896	3 1/2"API REG	GATOR	102,9	10-1630
114	8,8	3962	3 1/2"API REG	GATOR	127,3	10-1631
114	12,5	7650	BECO 3"	GATOR	268,8	10-1422

SANDVIK DRILTECH

Diameter: **OD = 89–219 mm**
Length: **S/S = 6010–9144 mm**



Outer diameter (mm)	Wall thickness (mm)	S/S length (mm)	Thread	Flats (mm)	Weight (kg)	Part Number
89	8,8	6010	2 3/8"IF	DRILTECH	109,0	10-1616
89	8,8	6096	2 3/8"IF	DRILTECH	110,4	10-1643
89	12,5	7620	2 3/8"IF	DRILTECH	187,2	10-1888
89	12,5	9144	2 3/8"IF	DRILTECH	223,2	10-1563
102	8,8	6010	2 3/8"IF	DRILTECH	139,6	10-2033
102	8,8	7620	2 7/8"API REG	DRILTECH	174,6	10-3793
102	8,8	9144	2 3/8"IF	DRILTECH	202,7	10-2041
102	8,8	9144	2 7/8"API REG	DRILTECH	205,3	10-3196
102	12,5	7620	2 7/8"API REG	DRILTECH	222,6	10-2096
102	12,5	9144	2 7/8"API REG	DRILTECH	264,5	10-2563
114	8,8	6096	2 7/8"IF	DRILTECH	158,4	10-1714
114	8,8	6096	3 1/2"API REG	DRILTECH	161,5	10-1512
114	8,8	7620	2 7/8"IF	DRILTECH	193,3	10-1458
114	8,8	7620	3 1/2"API REG	DRILTECH	196,4	10-1423
114	8,8	9144	2 7/8"IF	DRILTECH	228,2	10-2351
114	8,8	9144	3 1/2"API REG	DRILTECH	231,3	10-1597
114	12,5	7620	3 1/2"API REG	DRILTECH	256,3	10-1494
114	12,5	9144	3 1/2"API REG	DRILTECH	304,2	10-1808
114	19	7620	3 1/2"API REG	DRILTECH	362,4	10-1800
114	19	9144	3 1/2"API REG	DRILTECH	433,3	10-3534

Outer diameter (mm)	Wall thickness (mm)	S/S length (mm)	Thread	Flats (mm)	Weight (kg)	Part Number
127	8,8	7620	3 1/2"API REG	DRILTECH	227,3	10-1969
127	8,8	9144	3 1/2"API REG	DRILTECH	266,5	10-1974
127	12,5	7620	3 1/2"API REG	DRILTECH	290,7	10-1746
127	12,5	7620	3 1/2"BEKO	DRILTECH	294,0	10-2501
127	12,5	9144	3 1/2"API REG	DRILTECH	344,5	10-1747
127	12,5	9144	3 1/2"BEKO	DRILTECH	347,8	10-2036
127	19	7620	3 1/2"API REG	DRILTECH	418,4	10-3535
127	19	7620	3 1/2"BEKO	DRILTECH	421,4	10-1748
127	19	9144	3 1/2"API REG	DRILTECH	499,0	10-1600
127	19	9144	3 1/2"BEKO	DRILTECH	502,0	10-2295
140	12,5	9144	3 1/2"API REG	DRILTECH	385,0	10-2546
140	12,5	9144	3 1/2"BEKO	DRILTECH	396,4	10-2664
140	12,5	9144	4"FH	DRILTECH	392,1	10-3620
140	19	7620	3 1/2"BEKO	DRILTECH	475,0	10-1749
140	19	9144	3 1/2"BEKO	DRILTECH	565,0	10-1801

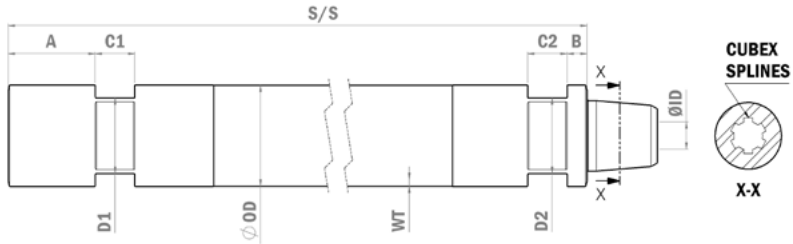
COMMON LARGER DIAMETERS

152	12-25		4" BECO	DRILTECH		On Request
159	12-25		4" BECO	DRILTECH		On Request
165	12-25		4" BECO	DRILTECH		On Request
168	12-25		4" BECO	DRILTECH		On Request
178	12-25		4 1/2" BECO	DRILTECH		On Request
194	12-25		5 1/4" BECO	DRILTECH		On Request
203	12-25		5 1/4" BECO	DRILTECH		On Request
219	12-38		5 1/4" BECO	DRILTECH		On Request

SANDVIK

CUBEX/UG/V-30/QXR (with splines)

Diameter: OD = 76–127 mm
Length: S/S = 1196–6096 mm

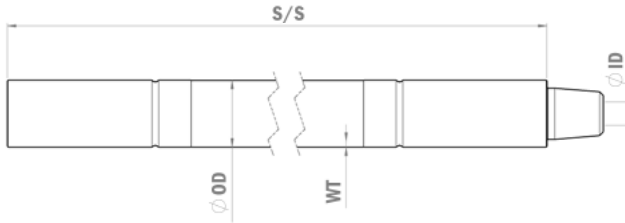


Outer diameter (mm)	Wall thickness (mm)	S/S length (mm)	Thread	Flats (mm)	Weight (kg)	Part Number
76	6,3	1829	#19	CUBEX	24,3	10-2263
76	6,3	3048	#19	CUBEX	37,4	10-2038
79	6,3	1219	#21	CUBEX	17,6	10-1625
79	6,3	1524	#21	CUBEX	21,1	10-1669
79	6,3	1829	#21	CUBEX	24,6	10-1265
89	6,3	1219	#21	CUBEX	21,7	10-1387
89	6,3	1219	#24	CUBEX	21,0	10-1678
89	6,3	1524	#21	CUBEX	25,6	10-1388
89	6,3	1524	#24	CUBEX	24,9	10-1399
89	6,3	1829	#21	CUBEX	29,5	10-1264
89	6,3	1829	#24	CUBEX	28,8	10-1270
102	6,3	1219	#24	CUBEX	27,3	10-1389
102	6,3	1524	#24	CUBEX	31,8	10-1390
102	6,3	1828	#24	CUBEX	36,3	10-1393
102	8,8	6096	#24	CUBEX	130,5	10-2092
102	12,5	4877	#24	CUBEX	141,1	10-2115
102	12,5	6096	#24	CUBEX	174,6	10-2110
114	6,3	1196	#28	CUBEX	31,2	10-2298
114	6,3	1219	#28	CUBEX	31,6	10-1679
114	6,3	1524	#28	CUBEX	36,7	10-1392
114	6,3	1829	#28	CUBEX	41,8	10-1804

Outer diameter (mm)	Wall thickness (mm)	S/S length (mm)	Thread	Flats (mm)	Weight (kg)	Part Number
114	8,8	6096	#28	CUBEX	156,2	10-2795
114	12,5	4877	#28	CUBEX	163,8	10-2199
114	12,5	6096	#28	CUBEX	202,1	10-2031
127	6,3	1219	#28	CUBEX	42,3	10-3296
127	6,3	1524	#28	CUBEX	48,0	10-2522
127	6,3	1829	#28	CUBEX	53,8	10-1262
127	8,8	1524	#28	CUBEX	56,4	10-3240
127	8,8	1829	#28	CUBEX	64,3	10-2942
127	10	1219	#28	CUBEX	51,6	10-2780
127	10	1524	#28	CUBEX	60,4	10-3531
127	12,5	4877	#28	CUBEX	186,6	10-3232
127	12,5	6096	#28	CUBEX	229,6	10-3180

SANDVIK QXR (TJBO) (no splines)

Diameter: **OD = 89–140 mm**
Length: **S/S = 4877–6096 mm**

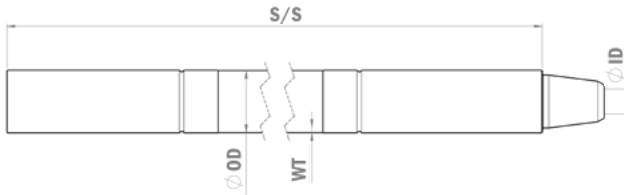


Outer diameter (mm)	Wall thickness (mm)	S/S length (mm)	Thread	Flats (mm)	Weight (kg)	Part Number
89	8,8	5000	2 3/8"API REG	TJBO	90,5	10-4157
89	8,8	6000	2 3/8"API REG	TJBO	106,4	10-4156
89	8,8	6096	2 3/8"API REG	TJBO	107,9	10-4155
89	8,8	6096	#24	TJBO	107,3	10-3730
89	12,5	6096	2 3/8"API REG	TJBO	150,8	10-3631
89	12,5	6096	#24	TJBO	150,2	10-2950
89	19	4877	2 3/8"API REG	TJBO	167,4	10-3630
89	19	4877	#24	TJBO	168,0	10-2951
102	6,3	6096	#24	TJBO	107,0	10-3554
102	8,8	5000	2 7/8"API REG	TJBO	115,2	10-4158
102	8,8	6000	2 7/8"API REG	TJBO	135,3	10-4159
102	8,8	6096	#24	TJBO	137,4	10-2759
102	12,5	4877	#24	TJBO	144,6	10-3648
102	12,5	6096	#24	TJBO	178,1	10-2983
102	19	4877	#24	TJBO	202,2	10-2963
102	19	6096	#24	TJBO	251,3	10-3689
114	8,8	5000	3 1/2"API REG	TJBO	133,4	10-4160
114	8,8	6000	3 1/2"API REG	TJBO	156,3	10-4161
114	12,5	6096	3 1/2"API REG	TJBO	206,4	10-3637
114	19	4877	3 1/2"API REG	TJBO	234,6	10-3636

Outer diameter (mm)	Wall thickness (mm)	S/S length (mm)	Thread	Flats (mm)	Weight (kg)	Part Number
127	8,8	4877	#28	TJBO	151,4	10-3200
127	8,8	6000	3 1/2" BECO	TJBO	179,8	10-3865
127	8,8	6096	#28	TJBO	182,7	10-3201
127	12	4877	3 1/2" API REG	TJBO	199,5	10-3638
127	12	4877	3 1/2" BECO	TJBO	198,9	10-2991
127	12	6096	3 1/2" API REG	TJBO	238,6	10-3264
127	12	6096	3 1/2" BECO	TJBO	237,7	10-2990
127	19	4877	3 1/2" BECO	TJBO	285,6	10-3112
127	19	6096	3 1/2" API REG	TJBO	286,5	10-3265
140	8,8	6000	4 1/2" API REG	TJBO	201,3	10-3191
140	8,8	6000	3 1/2" BECO	TJBO	204,8	10-3655
140	8,8	6000	4" BECO	TJBO	204,7	10-3729
140	12	4800	4 1/2" API REG	TJBO	214,5	10-3298
140	12	4800	3 1/2" BECO	TJBO	218,0	10-3639
140	12	6000	4 1/2" API REG	TJBO	261,6	10-3194
140	12	6000	3 1/2" BECO	TJBO	265,1	10-3266

SANDVIK DI (TITON/BPI)

Diameter: **OD = 76–140 mm**
Length: **S/S = 3000–7500 mm**

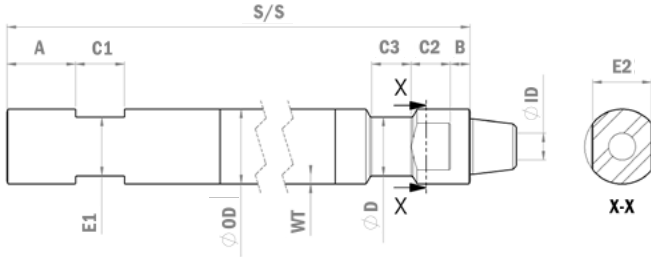


Outer diameter (mm)	Wall thickness (mm)	S/S length (mm)	Thread	Flats (mm)	Weight (kg)	Part Number
76	4	3000	2 3/8"API REG	DI/BPI	33,2	10-4162
76	6,3	3000	2 3/8"API REG	DI/BPI	42,6	10-2867
76	6,3	4000	2 3/8"API REG	DI/BPI	53,4	10-508616
76	6,3	5000	2 3/8"API REG	DI/BPI	64,2	10-508618
76	6,3	6000	2 3/8"API REG	DI/BPI	75,0	10-2868
76	8,8	5000	2 3/8"API REG	DI/BPI	80,8	10-3285
76	8,8	6000	2 3/8"API REG	DI/BPI	95,4	10-3284
89	4	3000	2 3/8"API REG	DI/BPI	45,6	10-3815
89	4	4000	2 3/8"API REG	DI/BPI	54,0	10-508617
89	6,3	4000	2 3/8"API REG	DI/BPI	68,6	10-3667
89	6,3	5000	2 3/8"API REG	DI/BPI	81,4	10-508619
89	6,3	6000	2 3/8"API REG	DI/BPI	94,2	10-505952
89	6,3	7500	2 3/8"API REG	DI/BPI	113,4	10-3691
89	8,8	4000	2 3/8"API REG	DI/BPI	79,3	10-3668
89	8,8	5000	2 3/8"API REG	DI/BPI	95,2	10-2955
89	8,8	6000	2 3/8"API REG	DI/BPI	111,2	10-671706
89	8,8	7500	2 3/8"API REG	DI/BPI	135,1	10-3733
102	6,3	4000	2 7/8"API REG	DI/BPI	83,4	10-3671
102	6,3	5000	2 7/8"API REG	DI/BPI	98,0	10-508620
102	6,3	6000	2 7/8"API REG	DI/BPI	112,6	10-506339
102	6,3	7500	2 7/8"API REG	DI/BPI	134,8	10-3692
102	8,8	4000	2 7/8"API REG	DI/BPI	102,0	10-3673

Outer diameter (mm)	Wall thickness (mm)	S/S length (mm)	Thread	Flats (mm)	Weight (kg)	Part Number
102	8,8	5000	2 7/8"API REG	DI/BPI	122,1	10-3128
102	8,8	6000	2 7/8"API REG	DI/BPI	142,3	10-4163
102	8,8	7500	2 7/8"API REG	DI/BPI	172,5	10-4164
114	6,3	4000	3 1/2"API REG	DI/BPI	97,4	10-4165
114	6,3	5000	3 1/2"API REG	DI/BPI	114,2	10-508621
114	6,3	6000	3 1/2"API REG	DI/BPI	131,0	10-505147
114	6,3	7500	3 1/2"API REG	DI/BPI	156,2	10-3693
114	8,8	4000	3 1/2"API REG	DI/BPI	118,1	10-4166
114	8,8	5000	3 1/2"API REG	DI/BPI	141,0	10-3130
114	8,8	6000	3 1/2"API REG	DI/BPI	163,9	10-3131
114	8,8	7500	3 1/2"API REG	DI/BPI	198,2	10-3719
127	6,3	5000	3 1/2"API REG	DI/BPI	134,2	10-3127
127	6,3	6000	3 1/2"API REG	DI/BPI	153,0	10-505190
127	6,3	7500	3 1/2"API REG	DI/BPI	181,2	10-3694
127	8,8	6000	3 1/2"API REG	DI/BPI	189,9	10-2923
127	8,8	7500	3 1/2"API REG	DI/BPI	228,4	10-3720
140	8,8	7500	4 1/2"API REG	DI/BPI	255,7	10-3695

CAT (REEDRILL, SKS, SKF, MD)

Diameter: **OD = 102–273 mm**
 Length: **S/S = 7620–10668 mm**



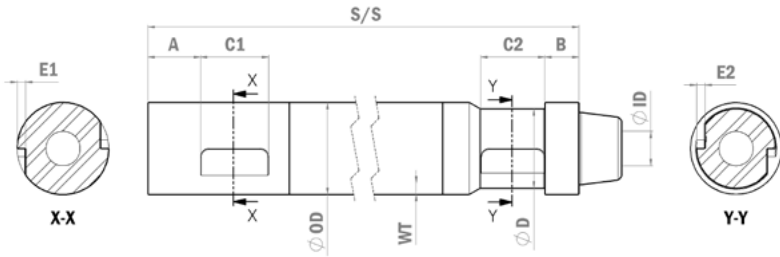
Outer diameter (mm)	Wall thickness (mm)	S/S length (mm)	Thread	Flats (mm)	Weight (kg)	Part Number
102	19	10668	3 1/8" DIBH	REED/SKF	433,5	10-4045
114	12	9144	3 1/2" DIBH	REED/SKF	309,6	10-3949
114	12	9144	3 1/2" API REG	REED/SKF	310,1	10-4167
114	12	9144	3" BECO	REED/SKF	311,7	10-3726
114	12	10668	3 1/2" DIBH	REED/SKF	357,5	10-3938
114	12	10668	3" BECO	REED/SKF	359,6	10-3727
114	19	9144	3 1/2" API REG	REED/SKF	436,5	10-4168
127	19	7620	3 1/2" BECO	REED/SKF	422,5	10-1739
127	19	9144	3 1/2" BECO	REED/SKF	503,1	10-3884
127	19	10668	3 1/2" BECO	REED/SKF	583,7	10-3868
140	12	10668	3 1/2" DIBH	REED/SKF	456,8	10-4005
140	19	9144	3 1/2" DIBH	REED/SKF	571,9	10-4004
140	19	10668	4 1/8" DIBH	REED/SKF	659,8	10-4043
140	25	10668	4 1/2" API REG	REED/SKF	769,0	10-3623

COMMON LARGER DIAMETERS

152	12–25		4" BECO	REED/SKF		On Request
159	12–25		4" BECO	REED/SKF		On Request
165	12–25		4" BECO	REED/SKF		On Request
168	12–25		4" BECO	REED/SKF		On Request
178	12–25		4 1/2" BECO	REED/SKF		On Request
194	12–25		5 1/4" BECO	REED/SKF		On Request
219	12–38		6" BECO	REED/SKF		On Request
235	12–38		6" BECO	REED/SKF		On Request
273	12–38		8" BECO	REED/SKF		On Request

CAT BUCYRUS

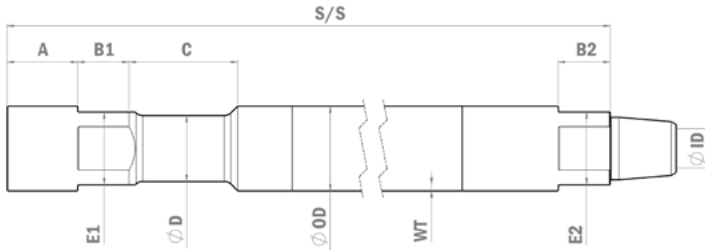
Diameter: **OD = 102–273 mm**
Length: **S/S = 8540–10668 mm**



Outer diameter (mm)	Wall thickness (mm)	S/S length (mm)	Thread	Flats (mm)	Weight (kg)	Part Number
COMMON LARGER DIAMETERS						
102	12–25		3 1/8" DIBH	BUCYRUS		On Request
114	12–25		3 1/2" DIBH	BUCYRUS		On Request
127	12–25		4 1/8" DIBH	BUCYRUS		On Request
140	12–25		4 1/8" DIBH	BUCYRUS		On Request
152	12–25		4" BECO	BUCYRUS		On Request
159	12–25		4" BECO	BUCYRUS		On Request
165	12–25		4" BECO	BUCYRUS		On Request
168	12–25		4" BECO	BUCYRUS		On Request
178	12–25		4 1/2" BECO	BUCYRUS		On Request
194	12–25		5 1/4" BECO	BUCYRUS		On Request
219	12–38		6" BECO	BUCYRUS		On Request
235	12–38		6" BECO	BUCYRUS		On Request
273	12–38		8" BECO	BUCYRUS		On Request

SCHRAMM CAROUSEL

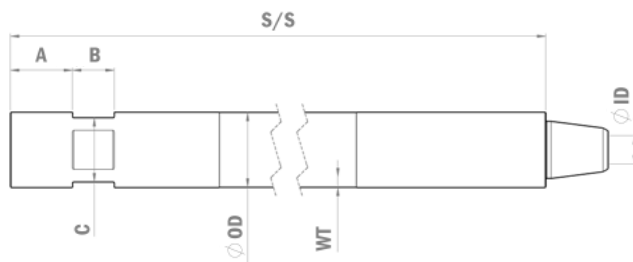
Diameter: **OD = 89–114 mm**
 Length: **S/S = 6000–7620 mm**



Outer diameter (mm)	Wall thickness (mm)	S/S length (mm)	Thread	Flats (mm)	Weight (kg)	Part Number
89	8,8	6096	2 3/8"IF DS	SCHRAMM-CAROUSEL	107,1	10-2001
89	10	6096	2 3/8"IF DS	SCHRAMM-CAROUSEL	126,7	10-1743
114	8,8	6000	2 7/8"IF	SCHRAMM-CAROUSEL	150,8	10-1170
114	8,8	6000	3 1/2"API REG	SCHRAMM-CAROUSEL	150,6	10-1177
114	8,8	6096	2 7/8"IF	SCHRAMM-CAROUSEL	153,0	10-1213
114	8,8	6096	3 1/2"API REG	SCHRAMM-CAROUSEL	152,8	10-1492
114	8,8	6096	NC35	SCHRAMM-CAROUSEL	151,4	10-1779
114	8,8	7620	2 7/8"IF	SCHRAMM-CAROUSEL	189,6	10-1214
114	8,8	7620	3 1/2"API REG	SCHRAMM-CAROUSEL	189,8	10-1178
114	12	6096	3 1/2"API REG	SCHRAMM-CAROUSEL	202,8	10-1769
114	12	7620	3 1/2"API REG	SCHRAMM-CAROUSEL	250,7	10-1737

SCHRAMM T64

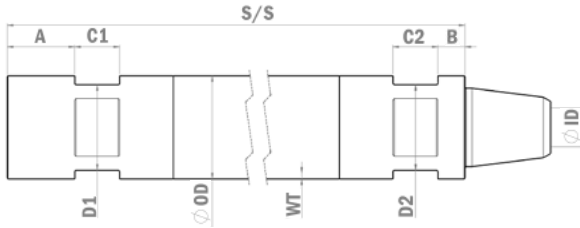
Diameter: **OD = 114 mm**
Length: **S/S = 2438–7620 mm**



Outer diameter (mm)	Wall thickness (mm)	S/S length (mm)	Thread	Flats (mm)	Weight (kg)	Part Number
114	8,8	2438	3 1/2"API REG	SCHRAMM-T64	74,4	10-2725
114	8,8	3658	3 1/2"API REG	SCHRAMM-T64	102,3	10-2726
114	8,8	6096	3 1/2"API REG	SCHRAMM-T64	158,1	10-1445
114	8,8	6248	3 1/2"API REG	SCHRAMM-T64	161,6	10-1845
114	8,8	7620	3 1/2"API REG	SCHRAMM-T64	194,4	10-2724
114	16	5182	3 1/2"API REG	SCHRAMM-T64	213,8	10-4026

SCHRAMM NT/WF (SQS)

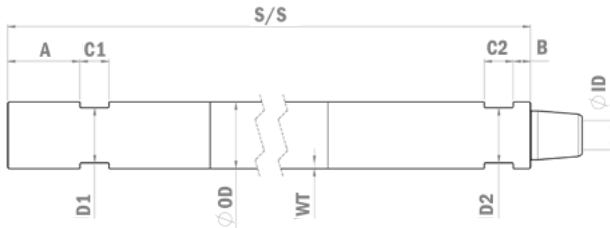
Diameter: **OD = 114 mm**
Length: **S/S = 6248–6706 mm**



Outer diameter (mm)	Wall thickness (mm)	S/S length (mm)	Thread	Flats (mm)	Weight (kg)	Part Number
114	8,8	6248	3 1/2"API REG	SCHRAMM-SQS	151,0	10-1580
114	8,8	6401	3 1/2"API REG	SCHRAMM-SQS	154,5	10-1591
114	8,8	6706	3 1/2"API REG	SCHRAMM-SQS	161,5	10-1581

SCHRAMM TX130

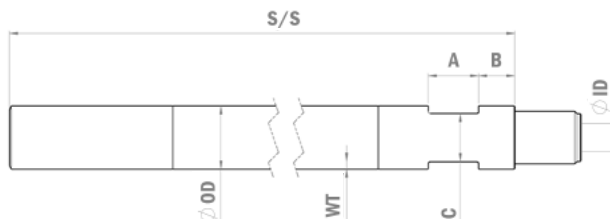
Diameter: **OD = 114–140 mm**
Length: **S/S = 6096–10000 mm**



Outer diameter (mm)	Wall thickness (mm)	S/S length (mm)	Thread	Flats (mm)	Weight (kg)	Part Number
114	8,8	6096	2 7/8"IF	SCHRAMM-TX130	162,7	10-2730
114	19	6096	2 7/8"IF	SCHRAMM-TX130	292,5	10-2797
140/114	8,8	10000	NC40	SCHRAMM-TX130	263,7	10-2742
140/114	19	10000	NC40	SCHRAMM-TX130	488,6	10-2798
140	8,8	9144	NC40	SCHRAMM-TX130	295,4	10-2910

CR50

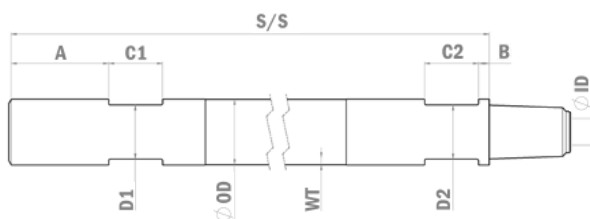
Diameter: **OD = 50 mm**
 Length: **S/S = 1500–3000 mm**



Outer diameter (mm)	Wall thickness (mm)	S/S length (mm)	Thread	Flats Pin/Box (mm)	Weight (kg)	Part Number
50	6,3	1500	CR50	-/-	11,0	10-3216
50	6,3	3000	CR50	38/-	21,1	10-2290

CR60

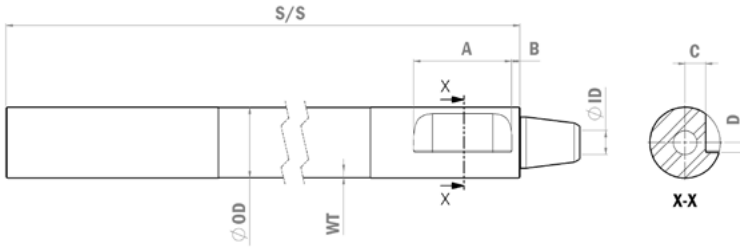
Diameter: **OD = 60 mm**
 Length: **S/S = 500–3000 mm**



Outer diameter (mm)	Wall thickness (mm)	S/S length (mm)	Thread	Flats (mm)	Weight (kg)	Part Number
60	6,3	500	CR60	50	6,7	10-2294
60	6,3	750	CR60	50	8,8	10-2649
60	6,3	1000	CR60	50	10,9	10-1856
60	6,3	1500	CR60	50	15,1	10-1832
60	6,3	2000	CR60	50	19,3	10-1855
60	6,3	3000	CR60	50	27,7	10-1831

HAUSHERR

Diameter: **OD = 76–127 mm**
 Length: **S/S = 3000–6000 mm**



Outer diameter (mm)	Wall thickness (mm)	S/S length (mm)	Thread	Flats (mm)	Weight (kg)	Part Number
70	6,3	4000	HAUS 2"	HAUSHERR	45,3	10-2747
70	8,8	3000	HAUS 2"	HAUSHERR	44,3	10-2469
70	8,8	4000	HAUS 2"	HAUSHERR	57,6	10-2151
76	6,3	3000	2 3/8"API REG	HAUSHERR	38,9	10-4171
76	6,3	3000	2 3/8"RS	HAUSHERR	39,5	10-4173
76	6,3	4000	2 3/8"API REG	HAUSHERR	49,7	10-1958
76	6,3	4000	2 3/8"RS	HAUSHERR	50,3	10-1487
76	6,3	5000	2 3/8"API REG	HAUSHERR	60,5	10-4172
76	6,3	5000	2 3/8"RS	HAUSHERR	61,1	10-4174
76	6,3	6000	2 3/8"API REG	HAUSHERR	71,3	10-2823
76	6,3	6000	2 3/8"RS	HAUSHERR	71,9	10-1396
76	8,8	3000	2 3/8"API REG	HAUSHERR	48,8	10-2508
76	8,8	3000	2 3/8"RS	HAUSHERR	49,5	10-2254
76	8,8	4000	2 3/8"API REG	HAUSHERR	63,4	10-2152
76	8,8	4000	2 3/8"RS	HAUSHERR	64,1	10-1097
76	8,8	4000	GG2"	HAUSHERR	63,7	10-1899
76	8,8	5000	2 3/8"API REG	HAUSHERR	78,0	10-4175
76	8,8	5000	2 3/8"RS	HAUSHERR	78,7	10-2156
76	8,8	6000	2 3/8"API REG	HAUSHERR	92,6	10-4176
76	8,8	6000	2 3/8"RS	HAUSHERR	93,3	10-1098
76	8,8	6000	GG2"	HAUSHERR	92,9	10-3403

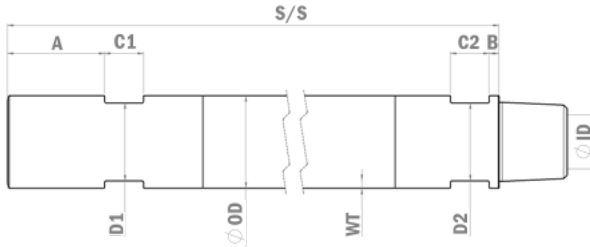
Outer diameter (mm)	Wall thickness (mm)	S/S length (mm)	Thread	Flats (mm)	Weight (kg)	Part Number
83	8,8	4000	2 3/8"API REG	HAUSHERR	71,2	10-4031
83	10	3000	2 3/8"API REG	HAUSHERR	60,0	10-1696
83	10	4000	2 3/8"API REG	HAUSHERR	77,9	10-1697
83	10	6000	2 3/8"API REG	HAUSHERR	113,7	10-2074
89	6,3	3000	2 3/8"API REG	HAUSHERR	48,7	10-4177
89	6,3	4000	2 3/8"API REG	HAUSHERR	61,5	10-3182
89	6,3	5000	2 3/8"API REG	HAUSHERR	74,3	10-4178
89	6,3	6000	2 3/8"API REG	HAUSHERR	87,1	10-4179
89	8,8	3000	2 3/8"API REG	HAUSHERR	59,5	10-4180
89	8,8	4000	2 3/8"API REG	HAUSHERR	75,5	10-4181
89	8,8	5000	2 3/8"API REG	HAUSHERR	91,5	10-4182
89	8,8	6000	2 3/8"API REG	HAUSHERR	107,5	10-2623

COMMON LARGER DIAMETERS

95	6-19		2 7/8" API REG	HAUSHERR		On Request
102	6-19		2 7/8" API REG	HAUSHERR		On Request
114	6-19		3 1/2" API REG	HAUSHERR		On Request
127	8-19		3 1/2" API REG	HAUSHERR		On Request

NORDMEYER

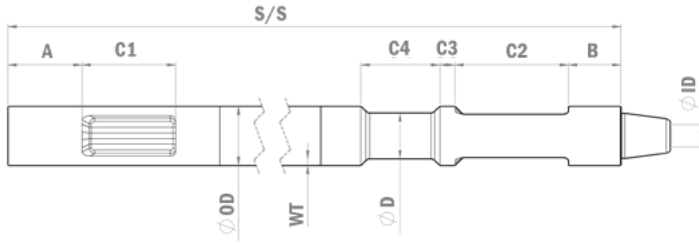
Diameter: **OD = 95 mm**
 Length: **S/S = 1000–3000 mm**



Outer diameter (mm)	Wall thickness (mm)	S/S length (mm)	Thread	Flats (mm)	Weight (kg)	Part Number
95	8	1000	NORDMEYER	80	21,5	10-2768
95	8	1500	NORDMEYER	80	30,0	10-2926
95	8	1700	NORDMEYER	80	33,4	10-2767
95	8	1800	NORDMEYER	80	35,1	10-2925
95	8	1900	NORDMEYER	80	36,8	10-2924
95	8	2000	NORDMEYER	80	38,5	10-2680
95	8	3000	NORDMEYER	80	55,7	10-3769

REICHDRILL

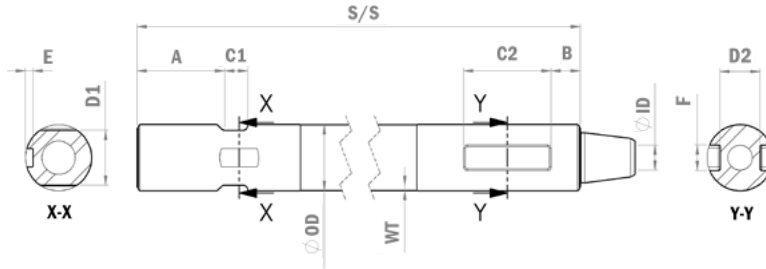
Diameter: **OD = 89–140 mm**
 Length: **S/S = 6096–10668 mm**



Outer diameter (mm)	Wall thickness (mm)	S/S length (mm)	Thread	Flats (mm)	Weight (kg)	Part Number
89	8,8	6096	2 3/8"IF	REICHDRILL	109,2	10-4195
89	8,8	7620	2 3/8"IF	REICHDRILL	133,5	10-4196
89	8,8	9144	2 3/8"IF	REICHDRILL	157,8	10-4197
102	8,8	6096	2 7/8" API REG	REICHDRILL	143,9	10-3579
102	8,8	7620	2 7/8" API REG	REICHDRILL	174,6	10-4185
102	8,8	9144	2 7/8" API REG	REICHDRILL	205,3	10-4186
114	12	6096	3 1/2"API REG	REICHDRILL	212,2	10-4199
114	12	7620	3 1/2"API REG	REICHDRILL	260,0	10-4200
114	12	9144	3 1/2"API REG	REICHDRILL	307,8	10-4201
127	12	6096	3 1/2"BECCO	REICHDRILL	249,5	10-4202
127	12	7620	3 1/2"BECCO	REICHDRILL	303,3	10-4203
127	12	9144	3 1/2"BECCO	REICHDRILL	357,1	10-4204
127	12	10668	3 1/2"BECCO	REICHDRILL	410,9	10-4205
140	12	6096	3 1/2"BECCO	REICHDRILL	286,3	10-4206
140	12	7620	3 1/2"BECCO	REICHDRILL	346,1	10-4207
140	12	9144	3 1/2"BECCO	REICHDRILL	405,9	10-4208
140	12	10668	3 1/2"BECCO	REICHDRILL	465,7	10-4209

REVAHTI

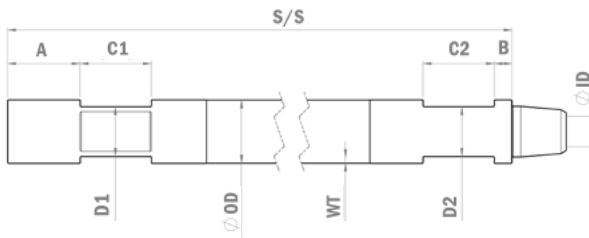
Diameter: **OD = 114 mm**
 Length: **S/S = 3048–6096 mm**



Outer diameter (mm)	Wall thickness (mm)	S/S length (mm)	Thread	Flats (mm)	Weight (kg)	Part Number
114	8,8	3048	3 1/2"API REG	REVAHTI	88,2	10-1925
114	8,8	6096	3 1/2"API REG	REVAHTI	158,0	10-1924

SPEEDSTAR

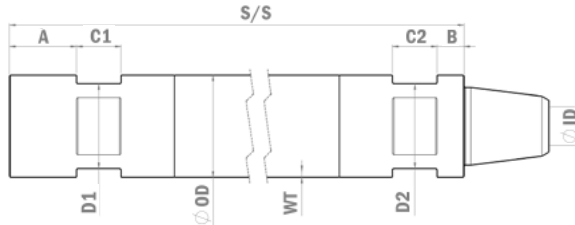
Diameter: **OD = 89–114 mm**
 Length: **S/S = 914–6096 mm**



Outer diameter (mm)	Wall thickness (mm)	S/S length (mm)	Thread	Flats (mm)	Weight (kg)	Part Number
89	8,8	6096	2 3/8"IF	SPEEDSTAR	104,0	10-1884
114	8,8	914	2 7/8"IF	SPEEDSTAR	39,8	10-2190
114	8,8	4572	2 7/8"IF	SPEEDSTAR	123,6	10-2189
114	8,8	6096	2 7/8"IF	SPEEDSTAR	158,5	10-1756

RC (Reverse Circulation)

Diameter: **OD = 76–305 mm**
 Length: **S/S = 500–10000 mm**

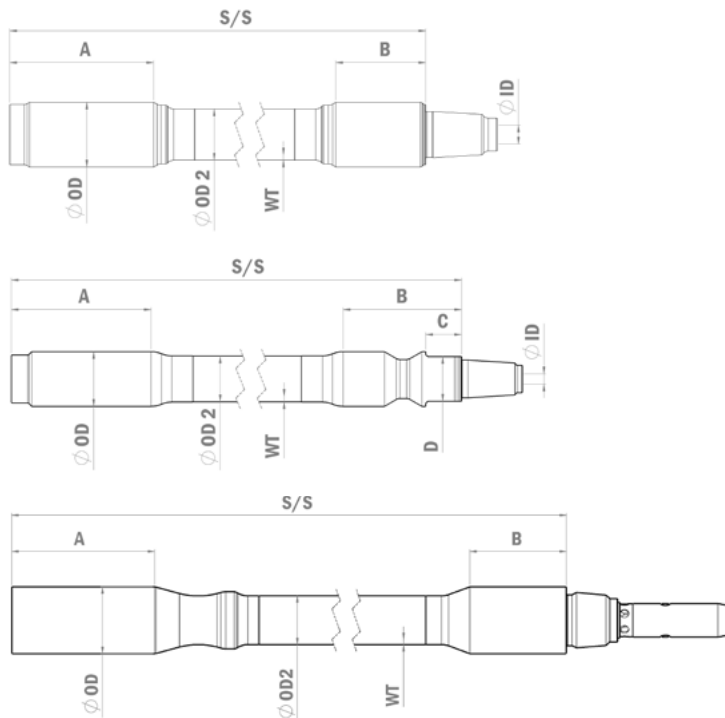


Outer diameter (mm)	Wall thickness (mm)	S/S length (mm)	Thread	Flats (mm)	Weight (kg)	Part Number
COMMON DIAMETERS						
76	4-8	500-10000	See below			On Request
83	4-8	500-10000	See below			On Request
89	4-8	500-10000	See below			On Request
102	4-8	500-10000	See below			On Request
114	5-12	500-10000	See below			On Request
127	6-12	500-10000	See below			On Request
140	8-19	500-10000	See below			On Request
152	10-25	500-10000	See below			On Request
159	10-25	500-10000	See below			On Request
165	10-25	500-10000	See below			On Request
168	10-25	500-10000	See below			On Request
178	10-25	500-10000	See below			On Request
194	12-25	500-10000	See below			On Request
219	12-25	500-10000	See below			On Request
235	12-25	500-10000	See below			On Request
273	12-25	500-10000	See below			On Request
305	12-25	500-10000	See below			On Request

Driconeq manufactures all types of RC-pipes. Common threads on Driconeq RC-pipes is: DR, METZKE, REMET, MATRIX, FABER and CSR.

DITCH-WITCH

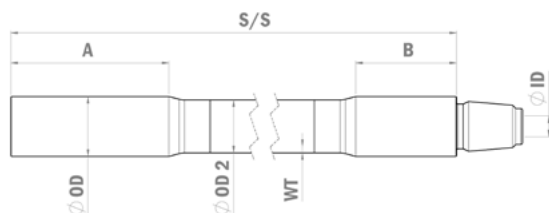
Diameter: **OD = 51–76 mm**
 Length: **S/S = 1828–3048 mm**



	Outer diameter (mm)	Wall thickness (mm)	S/S length (mm)	Thread	Flats (mm)	Weight (kg)	Part Number
(JT922, JT9)	51/42	5,0	1828	DW920	None	10,6	60-1043
(JT920, JT921)	51/42	5,0	2000	DW920	-/41,5	11,5	60-1009
(JT920L)	51/42	5,0	3000	DW920	-/41,5	16,1	60-1023
(JT1220)	60/48	6,3	3048	DW1220 M1	None	23,3	60-1038
(JT1720)	64/51	6,3	3000	DW1720	-/53,2	26,0	60-1016
(JT2020, JT20)	67/51	6,3	3048	DW2720	None	25,3	60-1039
(JT2720)	70/57	6,3	3000	DW2720	-/59,8	30,3	60-1015
(JT25, JT2720 M1, JT30, JT3020 M1)	76/60	6,3	3000	DW2720 M1	None	31,9	60-1044
(AT30, AT2720)	82/60	6,3	2850	AT3020	None	48,6	60-1048

VERMEER

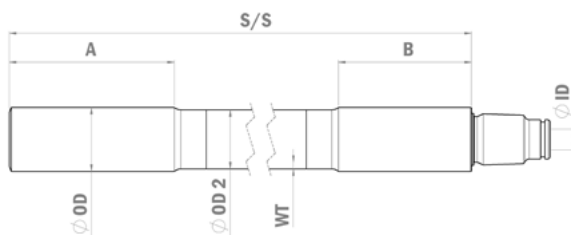
Diameter: **OD = 48–67 mm**
 Length: **S/S = 1828–3048 mm**



	Outer diameter (mm)	Wall thickness (mm)	S/S length (mm)	Thread	Flats (mm)	Weight (kg)	Part Number
(D6x6, D7x11, D7x11A, D7x11 S2, D9x13 S2)	48/42	5,0	1828	#200	None	9,8	60-1006
(D10x14, D10x15)	48/42	5,0	3048	#200	None	15,4	60-1011
(D16x20A, D16x20 S2, D18x22)	54/48	6,3	3048	#250	None	22,0	60-1026
(D20x22, D20x22 S2)	58/51	6,3	3000	#400	None	22,7	60-1041
(D24x40, D24x40A, D24x40 S2)	67/60	6,3	3048	#600	None	28,8	60-3023

TRACTO-TECHNIC

Diameter: **OD = 62 mm**
 Length: **S/S = 3000 mm**



	Outer diameter (mm)	Wall thickness (mm)	S/S length (mm)	Thread	Flats (mm)	Weight (kg)	Part Number
(Grundodrill 10S/X, Grundodrill 13X)	62/57	6,3	3000	TT RD49	None	27,0	60-1025

Specialised and standard products are available
for DTH, ROTARY, HDD and RC drilling methods.
For all types of drill rigs, in all locations.

Contact us for more information:
www.driconeq.com